

hélisphériques

for wind ensemble

PRESTON BEEBE (2013)

hélisphériques

commissioned by the Canadian Music Center (CMC)
and l'Harmonie Con Brio de l'école FACE
Montréal, QC CANADA

First Performance

May 14, 2013 in Montréal, QC Canada
l'Harmonie Con Brio de l'école FACE
Conductor: Carol Kay

hélisphériques

Instrumentation

2 Flutes
2 Oboes
3 Clarinets in Bb
1 Bass Clarinet
2 Alto Saxophones
1 Tenor Saxophone
1 Baritone Saxophone
1 Bassoon
4 Horns in F
3 Trumpets in Bb
2 Trombones
1 Bass Trombone
1 Euphonium
1 Tuba

Percussion 1

-small cymbal on drum with bow
-Monkey Whistle - whistle worn around neck to create a wind sound
-Bull Roarer
-Thunder Sheet
-Bass Drum

Percussion 2

-vacuum cleaner tube - spin in the air at various dynamics to create “aeolian” sounds.
-Monkey Whistle - whistle worn around neck to create a wind sound
-Tam-Tam

Percussion 3

-snare drum
-bass drum
-bamboo wind chimes

Sticks & Mallets

-brushes
-soft felt
-bass drum rollers
-superball (a rubber ball attached to a stick)

Notes:

Hélisphériques was composed for l’Harmonie Con Brio de l’école FACE. The title is a blend of the two words hélicoptère and atmosphérique. This piece is an exploration of atmospheric air pressures and cloud formations.

duration: 7’

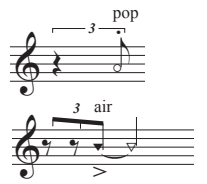
hélistphériques

Legend

General

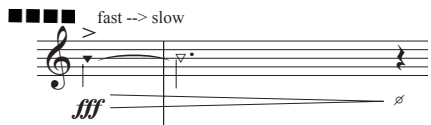
accel
decel

Accelerate or decelerate to the next notated rhythm. Tempo does not change.



With the palm of your hand, strike the mouthpiece to form a popping sound. For woodwinds, mouthpiece needs to be removed to achieve this effect.

Play air into instrument.

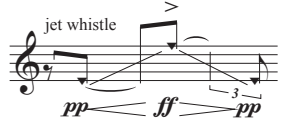


Articulated air: play speeds as indicated, interpolating fast --> slow or slow --> fast

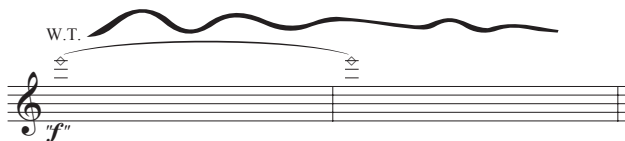


Tongue Ram

Flutes

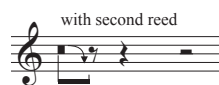


Jet Whistle



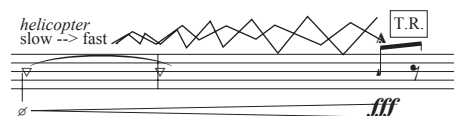
Whistle Tone: with an open but at the same time controlled embouchure and a very low air pressure it is possible to play whistle tones. Sometimes you obtain this sound when you decrease the air pressure playing a low note on the flute. Whistle notes are easiest to control in the third octave, where you use the original fingerings.

Double Reeds



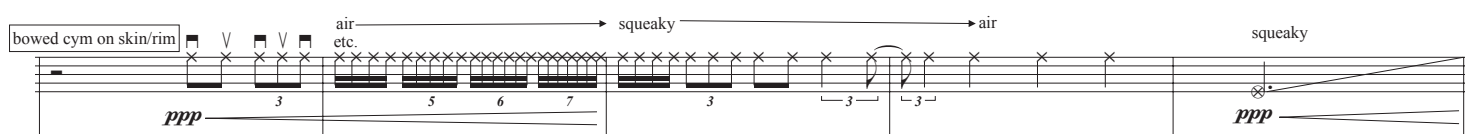
Play note with a second reed that is not connected to the mouthpiece. Bend pitch as notated.

Brass

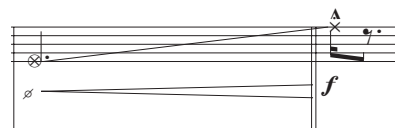


Helicopter: achieved by putting your entire mouth around the mouthpiece and fluttering your tongue to create a helicopter sound. Alter the speed as indicated.

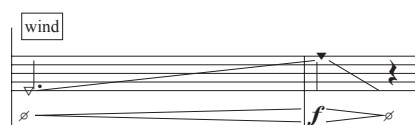
Percussion



Place a small cymbal of 10"-12" on the edge of the drum so that the cymbal is touching both the skin and the rim. Bow cymbal as notated and move cymbal on these surfaces as notated to bend the pitch. Change bow pressure as indicated to make air or squeaky pitches.



Wind: play monkey whistles with the dynamics indicated, glissando will occur naturally.



Played with brushes. Accel and decel to next notated rhythm while keeping the same tempo as the ensemble.
Left hand: stir
Right hand: tap

hélisphériques

Preston Beebe (2013)

3/4 ♩ = 60

4/4

A

Flute 1 jet whistle *pp* *ff* *pp*

Flute 2 jet whistle *pp* *ff* *pp*

Oboe 1 with second reed *p*

Oboe 2 with second reed *p*

Clarinet in B \flat 1 *sfpp* *f* *sfpp* *f*

Clarinet in B \flat 2 *sfpp* *f* *sfpp* *f*

Clarinet in B \flat 3 *sfpp* *f* *sfpp* *f*

Bass Clarinet *sfpp* *f* *sfpp* *f*

Alto Sax 1 *sfpp* *f* *sfpp* *f*

Alto Sax 2 *sfpp* *f* *sfpp* *f*

Tenor Sax *sfpp* *f* *sfpp* *f*

Baritone Sax *sfpp* *f* *sfpp* *f*

Bassoon without mouthpiece *f*

Horn in F 1 *pp* *f* *sfpp* *f*

Horn in F 2 *pp* *f* *sfpp* *f*

Horn in F 3 *pp* *f* *sfpp* *f*

Horn in F 4 *pp* *f* *sfpp* *f*

Trumpet in B \flat 1 *sfpp* *f* *sfpp* *f*

Trumpet in B \flat 2 *sfpp* *f* *sfpp* *f*

Trumpet in B \flat 3 *sfpp* *f* *sfpp* *f*

Trombone 1 *sfpp* *f* *sfpp* *f* *sfpp* *f*

Trombone 2 *sfpp* *f* *sfpp* *f* *sfpp* *f*

Bass Trombone *sfpp* *f* *sfpp* *f* *sfpp* *f*

Euphonium *sfpp* *f* *sfpp* *f* *sfpp* *f*

Tuba *sfpp* *f* *sfpp* *f* *sfpp* *f*

Percussion 1 bull roarer *mf*

Percussion 2 wind *ppp* *mf* *p*

Percussion 3 *mf*

W.T. *mf* *W.T.*

Fl. 1 *mf* *W.T.*

Fl. 2 *mf*

Ob. 1

Ob. 2

B♭ Cl. 1 *sfp* *f*

B♭ Cl. 2 *sfp* *f*

B♭ Cl. 3 *sfp* *f*

B. Cl. *sfp* *f*

A. Sx. 1 *sfp* *f*

A. Sx. 2 *sfp* *f*

T. Sx. *sfp* *f*

B. Sx. *sfp* *f*

Bsn. *sfp* *f* with second reed

ppp *p*

Hn. 1 *pp* *f* *sfp* *f* *sfp*

Hn. 2 *pp* *f* *sfp* *f* *sfp*

Hn. 3 *pp* *f* *sfp* *f* *sfp*

Hn. 4 *pp* *f* *sfp* *f* *sfp*

B♭ Tpt. 1 *sfp* *f* *sfp*

B♭ Tpt. 2 *sfp* *f* *sfp*

B♭ Tpt. 3 *sfp* *f* *sfp*

Tbn. 1 *sfp* *ff* *sfp* *f* *sfp*

Tbn. 2 *f* *sfp* *ff* *sfp* *f* *sfp*

B. Tbn. *f* *sfp* *ff* *sfp* *f* *sfp*

Euph. *f* *pp* *sfp* *ff* *ppp* *pp*

Tuba *ppp* *pp* *pp*

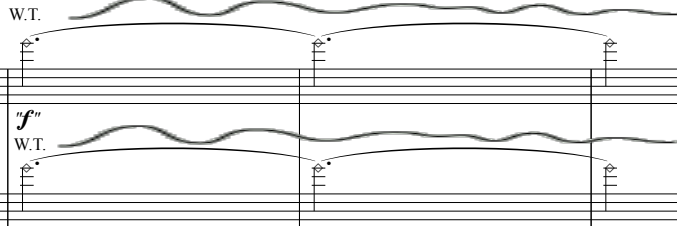
Perc. 1 *bull roarer*

Perc. 2 *wind* *mf* *p* *mf* *p* *f*

Perc. 3 *BD* *mf* *p* *mf* *p* *f*

pp *p*

3/4 B



Fl. 1 *f* [T.R.]

Fl. 2 *f* [T.R.]

Ob. 1 *p* *ppp*

Ob. 2 *p* *ppp*

B♭ Cl. 1 *ppp* *sfpp* *air* *f*

B♭ Cl. 2 *ppp* *sfpp* *air* *f*

B♭ Cl. 3 *ppp* *sfpp* *air* *f*

B. Cl. *f* *ppp* *sfpp* *air* *f*

A. Sax. 1 *ppp* *sfpp* *air* *f*

A. Sax. 2 *ppp* *sfpp* *air* *f*

T. Sax. *f* *ppp* *sfpp* *air* *f*

B. Sax. *f* *ppp* *sfpp* *air* *f*

Bsn. *f* *ppp* *sfpp* *air* *f*

13 3/4

Hn. 1 *f* *ppp* *sfpp* *air* *f*

Hn. 2 *f* *ppp* *sfpp* *air* *f*

Hn. 3 *f* *ppp* *sfpp* *air* *f*

Hn. 4 *pp* *f* *ppp* *sfpp* *air* *f*

B♭ Tpt. 1 *ff* [T.R.] *sfpp* *air* *f*

B♭ Tpt. 2 *ff* [T.R.] *sfpp* *air* *f*

B♭ Tpt. 3 *ff* [T.R.] *sfpp* *air* *f*

Tbn. 1 *ff* [T.R.] *sfpp* *air* *f*

Tbn. 2 *ff* [T.R.] *sfpp* *air* *f*

B. Tbn. *ff* [T.R.] *sfpp* *air* *f*

Euph. *ff* [T.R.] *sfpp* *air* *f*

Tuba *ff* [T.R.] *sfpp* *air* *f*

Perc. 1

Perc. 2

Perc. 3

3/4

FL. 1

FL. 2

Ob. 1

Ob. 2

B♭ Cl. 1

B♭ Cl. 2

B♭ Cl. 3

B. Cl.

A. Sax. 1

A. Sax. 2

T. Sax.

B. Sax.

Bsn.

Hn. 1

Hn. 2

Hn. 3

Hn. 4

B♭ Tpt. 1

B♭ Tpt. 2

B♭ Tpt. 3

Tbn. 1

Tbn. 2

B. Tbn.

Euph.

Tuba

Perc. 1

Perc. 2

Perc. 3

bowed cym on skin/rim

wind

BD

ppp < mf

f bamboo wind chimes

SD snares off, muted LH - stir brushes RH - tap

ppp

25

4/4 **3/4** **4/4**^D

Fl. 1 *f* **T.R.** *fff* *fast --> slow* *slow --> fast*

Fl. 2 *f* **T.R.** *fff* *fast --> slow* *slow --> fast*

Ob. 1 *pp* *p* *pp* *fff* *fast --> slow* *pp*

Ob. 2 *pp* *p* *pp* *fff* *fast --> slow*

B♭ Cl. 1 *pp* *p* *fff* *fast --> slow*

B♭ Cl. 2 *pp* *p* *fff* *fast --> slow*

B♭ Cl. 3 *pp* *p* *fff* *fast --> slow*

B. Cl. *fff* *fast --> slow*

A. Sx. 1 *pp* *p* *fff* *fast --> slow*

A. Sx. 2 *pp* *p* *fff* *fast --> slow*

T. Sx. *fff* *fast --> slow*

B. Sx. *fff* *fast --> slow*

Bsn. *fff* *fast --> slow*

25

4/4 **3/4** **4/4**

Hn. 1 *fff* **T.R.** *fff* *fast --> slow*

Hn. 2 *fff* **T.R.** *fff* *fast --> slow*

Hn. 3 *fff* **T.R.** *fff* *fast --> slow*

Hn. 4 *fff* **T.R.** *fff* *fast --> slow*

B♭ Tpt. 1 *fff* **T.R.** *fff* *fast --> slow*

B♭ Tpt. 2 *fff* **T.R.** *fff* *fast --> slow*

B♭ Tpt. 3 *fff* **T.R.** *fff* *fast --> slow*

Tbn. 1 *fff* *helicopter slow --> fast* *air* *fff* **T.R.** *pp* *p*

Tbn. 2 *fff* *helicopter slow --> fast* *air* *fff* **T.R.** *pp* *p*

B. Tbn. *fff* *helicopter slow --> fast* *air* *fff* **T.R.** *pp* *p*

Euph. *fff* **T.R.** *pp* *p*

Tuba *fff* **T.R.** *pp* *p*

25

Perc. 1 *ppp* *air* *accel* *squeaky* *decel* *air* *ppp* *wind* *mf* *bull roarer*

Perc. 2 *ppp* *stir only* *decel* *decel* *ppp* *mf*

Perc. 3 *ppp* *ppp* *ppp* *mf*

4/4

3/4

4/4

F $\text{♩} = 100$

Fl. 1

Fl. 2

Ob. 1

Ob. 2

B♭ Cl. 1

B♭ Cl. 2

B♭ Cl. 3

B. Cl.

A. Sx. 1

A. Sx. 2

T. Sx.

B. Sx.

Bsn.

Hn. 1

Hn. 2

Hn. 3

Hn. 4

B♭ Tpt. 1

B♭ Tpt. 2

B♭ Tpt. 3

Tbn. 1

Tbn. 2

B. Tbn.

Euph.

Tuba

Perc. 1

Perc. 2

Perc. 3

3
4

4
4

G

FL. 1
FL. 2
Ob. 1
Ob. 2
B♭ Cl. 1
B♭ Cl. 2
B♭ Cl. 3
B. Cl.
A. Sx. 1
A. Sx. 2
T. Sx.
B. Sx.
Bsn.

Hn. 1
Hn. 2
Hn. 3
Hn. 4
B♭ Tpt. 1
B♭ Tpt. 2
B♭ Tpt. 3
Tbn. 1
Tbn. 2
B. Tbn.
Euph.
Tuba

Perc. 1
Perc. 2
Perc. 3

49

Fl. 1

Fl. 2

Ob. 1

Ob. 2

B♭ Cl. 1

B♭ Cl. 2

B♭ Cl. 3

B. Cl.

A. Sx. 1

A. Sx. 2

T. Sx.

B. Sx.

Bsn.

49

Hn. 1

Hn. 2

Hn. 3

Hn. 4

B♭ Tpt. 1

B♭ Tpt. 2

B♭ Tpt. 3

Tbn. 1

Tbn. 2

B. Tbn.

Euph.

Tuba

49

Perc. 1

Perc. 2

Perc. 3

3/4

4/4

3/4

4/4

I rit.-----

Fl.
 Fl. 1
 Fl. 2
Ob.
 Ob. 1
 Ob. 2
B♭ Cl.
 B♭ Cl. 1
 B♭ Cl. 2
 B♭ Cl. 3
B. Cl.
A. Sx.
 A. Sx. 1
 A. Sx. 2
T. Sx.
B. Sx.
Bsn.

Hn.
 Hn. 1
 Hn. 2
 Hn. 3
 Hn. 4
B♭ Tpt.
 B♭ Tpt. 1
 B♭ Tpt. 2
 B♭ Tpt. 3
Tbn.
 Tbn. 1
 Tbn. 2
B. Tbn.
Euph.
Tuba

3/4

4/4

Perc.
 Perc. 1
 Perc. 2
 Perc. 3

J = 60

Fl. 1, Fl. 2, Ob. 1, Ob. 2, B♭ Cl. 1, B♭ Cl. 2, B♭ Cl. 3, B. Cl., A. Sx. 1, A. Sx. 2, T. Sx., B. Sx., Bsn.

61

air, jet whistle, pp, ff, pp, sfpp, f, sfpp

Hn. 1, Hn. 2, Hn. 3, Hn. 4, B♭ Tpt. 1, B♭ Tpt. 2, B♭ Tpt. 3, Tbn. 1, Tbn. 2, B. Tbn., Euph., Tuba

61

pp, f, sfpp, air, f, sfpp, f, sfpp

Perc. 1, Perc. 2, Perc. 3

61

air, bull roarer, wind, decel, ppp, mf, BD, mf

Fl. 1 *f* **T.R.**

Fl. 2 *f* **T.R.**

Ob. 1

Ob. 2

B♭ Cl. 1 *pp* *f* *pp* *f* *pp* *f*

B♭ Cl. 2 *f* *pp* *f* *pp* *f* *pp* *f*

B♭ Cl. 3 *f* *pp* *f* *pp* *f* *pp* *f*

B. Cl. *subpp* *f* *pp* *f* *pp* *f*

A. Sx. 1 slap tongue *sfz* *sfp* air

A. Sx. 2 slap tongue *sfz* *sfp* air

T. Sx. slap tongue *sfz* *sfp* air

B. Sx. slap tongue *sfz* *sfp* air

Bsn. *sfp* air

Hn. 1 *mf* **4/4** *p* *p* *sfp* air

Hn. 2 *p* *p* *sfp* air

Hn. 3 *p* *p* *sfp* air

Hn. 4 *p* *p* *sfp* air

B♭ Tpt. 1 *fff* **T.R.** *fast --> slow* *sfp* air

B♭ Tpt. 2 *fff* **T.R.** *fast --> slow* *sfp* air

B♭ Tpt. 3 *fff* **T.R.** *fast --> slow* *sfp* air

Tbn. 1 *fff* **T.R.** *helicopter slow --> fast* *fff* **T.R.** *sfp* air

Tbn. 2 *fff* **T.R.** *helicopter slow --> fast* *fff* **T.R.** *sfp* air

B. Tbn. *fff* **T.R.** *helicopter slow --> fast* *fff* **T.R.** *fast --> slow* *sfp* air

Euph. *ppp* *p* *sfp* air

Tuba *ppp* *p* *sfp* air

Perc. 1 *ppp* *air etc.* *squeaky* *air* *squeaky*

Perc. 2 **4/4** *bull roarer* *ppp* *air etc.* *squeaky* *air* *squeaky*

Perc. 3 *ppp* *SD* LH - stir brushes RH - tap *accel* *f* *decel* *accel* *f*

2/4 3/4

74

Fl. 1 jet whistle *fff* jet whistle *pp*

Fl. 2 *fff* *pp*

Ob. 1

Ob. 2

B♭ Cl. 1 *ff* *ppp*

B♭ Cl. 2 *ff* *ppp*

B♭ Cl. 3 *ff* *ppp*

B. Cl.

A. Sx. 1 *p* *sfz* *mfz* *fp* *sfz*

A. Sx. 2 *pp* *sfz* *mfz* *fp* *sfz*

T. Sx.

B. Sx. fast --> slow *f* slow --> fast *p* *f*

Bsn. fast --> slow *f* slow --> fast *p* *f*

74

Hn. 1 *ff* *pp* *fff* *pp*

Hn. 2 *ff* *pp* *fff* *pp*

Hn. 3 *ff* *pp* *fff* *pp*

Hn. 4 *ff* *pp* *fff* *pp*

B♭ Tpt. 1 *ff* *sfp* *fff* pop helicopter slow --> fast

B♭ Tpt. 2 *ff* *sfp* *fff* pop helicopter slow --> fast

B♭ Tpt. 3 *ff* *sfp* *fff* pop helicopter slow --> fast

Tbn. 1 *ff* *sfp* *fff* pop helicopter slow --> fast

Tbn. 2 *ff* *sfp* *fff* pop helicopter slow --> fast

B. Tbn. *ff* *sfp* *fff* pop helicopter slow --> fast

Euph. *ff* *sfp* *fff* pop slow --> fast

Tuba *ff* *sfp* *fff* slow --> fast

74

Perc. 1 *f* wind

Perc. 2 bull roarer

Perc. 3 *ppp* superball

80

Fl. 1 *f* *f''* *f* W.T. *f* W.T. *f*

Fl. 2 *f* *f''* *f* W.T. *f* W.T. *f*

Ob. 1

Ob. 2

B♭ Cl. 1 *pp* *f* *pp*

B♭ Cl. 2 *mf* *pp* *mf* *pp*

B♭ Cl. 3 *p* *pp* *p* *pp*

B. Cl. *pp* *pp* *pp*

A. Sx. 1 *sfpp* *ff*

A. Sx. 2 *sfpp* *ff*

T. Sx. *sfpp* *ff*

B. Sx. *sfpp* *ff*

Bsn. *mf*

Hn. 1 *ppp* *fff* fast --> slow

Hn. 2 *ppp* *fff* fast --> slow

Hn. 3 *ppp* *fff* fast --> slow

Hn. 4 *ppp* *fff* fast --> slow

B♭ Tpt. 1 *fff* *ppp* *mp* with plunger

B♭ Tpt. 2 *fff* *ppp* *mp* with plunger

B♭ Tpt. 3 *fff* *ppp* *mp* with plunger

Tbn. 1 *fff* helicopter slow --> fast *fff*

Tbn. 2 *fff* helicopter slow --> fast *fff*

B. Tbn. *fff* helicopter slow --> fast *fff*

Euph. *fff*

Tuba *fff* *ppp* *ppp* *p* *ppp* squeaky

Perc. 1 bowed cym on skin/rim *ppp* air *ppp* 3 5 6 7 *mf* etc.

Perc. 2 bull roarer

Perc. 3 *ppp* 3 3 3 3 3 3 3 accel decel

L W.T.

86

Fl. 1 *sfpp* air *fff* [T.R.] *f* W.T. *pppp* jet whistle

Fl. 2 *sfpp* air *fff* [T.R.] *f* W.T. *pppp* jet whistle

Ob. 1

Ob. 2

B♭ Cl. 1 *f* *pp* *f*

B♭ Cl. 2 *f* *pp* *f*

B♭ Cl. 3 *f* *pp* *f*

B. Cl. *f* *pp* *f*

A. Sx. 1 *pp* air → tone → air *mf* *sfpp* *fff* [T.R.]

A. Sx. 2 *pp* 3 air → tone → air *mf* *sfpp* *fff* [T.R.]

T. Sx. *pp* air → tone → air *mf* *sfpp* *fff* [T.R.]

B. Sx. *pp* air → tone → air *mf* *sfpp* *fff* [T.R.]

Bsn. *sfpp* *fff* [T.R.]

Hn. 1 *pp* *mf* *fff* [T.R.]

Hn. 2 *pp* *mf* *fff* [T.R.]

Hn. 3 *pp* *mf* *fff* [T.R.]

Hn. 4 *pp* *mf* *fff* [T.R.]

B♭ Tpt. 1 *pp* *sfpp* *fff* [T.R.]

B♭ Tpt. 2 *pp* *sfpp* *fff* [T.R.]

B♭ Tpt. 3 *pp* *sfpp* *fff* [T.R.]

Tbn. 1 *sfpp* *fff* [T.R.]

Tbn. 2 *sfpp* *fff* [T.R.]

B. Tbn. *sfpp* *fff* [T.R.]

Euph. *sfpp* *fff* [T.R.]

Tuba *sfpp* *fff* [T.R.]

Perc. 1 *ppp* thunder sheet

Perc. 2 *f* *ppp* BD

Perc. 3 *ff*

92

Fl. 1 *ff* *ppp* *ff* *ppp*

Fl. 2 *ff* *ppp* *ff* *ppp*

Ob. 1 *ff* *ppp*

Ob. 2 *ff* *ppp*

B \flat Cl. 1 *ff* *ppp*

B \flat Cl. 2 *ff* *ppp*

B \flat Cl. 3 *ff* *ppp*

B. Cl. *ff* *ppp*

A. Sx. 1 *ff*

A. Sx. 2 *ff* *ppp*

T. Sx. *ff* *ppp*

B. Sx. *ff* *ppp*

Bsn. *ff* *ppp*

Hn. 1 *ff* *ppp*

Hn. 2 *ff* *ppp*

Hn. 3 *ff* *ppp*

Hn. 4 *ff* *ppp*

B \flat Tpt. 1 *f*

B \flat Tpt. 2 *f*

B \flat Tpt. 3 *f*

Tbn. 1 *f*

Tbn. 2 *f*

B. Tbn. *f*

Euph. *f*

Tuba *f*

Perc. 1 *mf*

Perc. 2 *mf*

Perc. 3 *mf* *accel* *decel*

2/4

98

Fl. 1

Fl. 2

Ob. 1

Ob. 2

B♭ Cl. 1

B♭ Cl. 2

B♭ Cl. 3

B. Cl.

A. Sx. 1

A. Sx. 2

T. Sx.

B. Sx.

Bsn.

2/4

98

Hn. 1

Hn. 2

Hn. 3

Hn. 4

B♭ Tpt. 1

B♭ Tpt. 2

B♭ Tpt. 3

Tbn. 1

Tbn. 2

B. Tbn.

Euph.

Tuba

2/4

98

Perc. 1

Perc. 2

Perc. 3